

UDesign Release Notes December 2023

This UDesign update contains the following enhancements: -

Promotional Discount

Metrotile is now available to order and you will receive a promotional discount if ordered with an Ultrarroof.

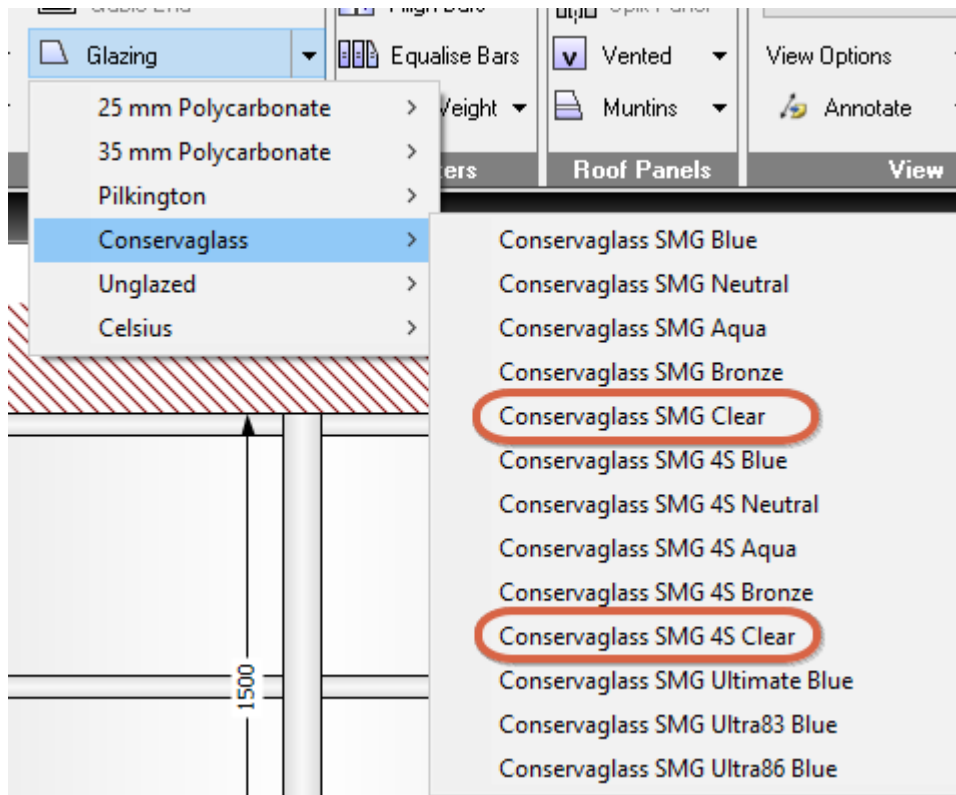
SDG changes

- General Bug Fixes
- Allow hup! Variable Corners
- Flat Roof Structural Posts

New Glazing

Two new glazing types have been added to the list.

- Conservaglass SMG Clear
- Conservaglass SMG 4S Clear



Thermal Warning – Livinroof & Ultrarroof

A Warning has been added to UDesign if a Scottish or Welsh postcode has been applied to the SDG and the Thermal Enhancement is set to “Standard 0.15 uValue”.

“Warning: Installation postcode is in Wales or Scotland. Please contact Customer to check if Thermal Enhancement is required.”

The screenshot shows the 'Options' tab in the 'Roof' section of the UDesign software. The 'General' sub-tab is selected. A table lists various options and their values:

Key	Value
Roof System?	ULTRAFRAME
Victorian Fixing Kit	None
Is tool Kit required?	No
Extend Half Ridge Left +60mm?	No
Extend Half Ridge Right +60mm?	No
Conservaflash Soaker Only	Soaker Only
Use Twin Bolts	Yes
Use Poly Clip?	Yes
Muntin Type?	Standard
Create a D/WG from Intent	No
SAT File Creation (Production Purposes Only)	No
Thermal Enhancement?	Standard 0.15 uValue

If you change this to 0.12 uValue the Warning will disappear.

Hip / Ridge Tiles Removed from Ultrarroof

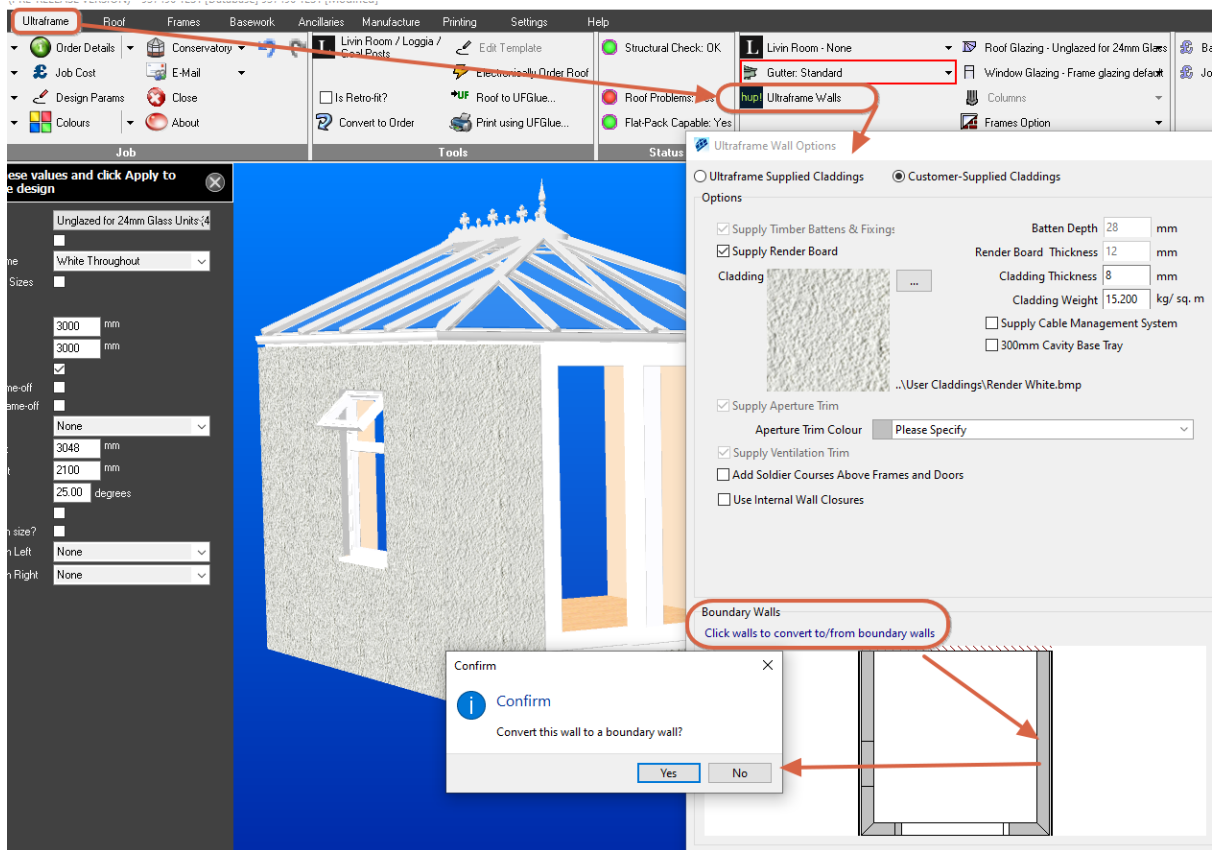
In the Ultrarroof system the tile options have been removed from the Hip / Ridge selection.

The screenshot shows the 'Roof Details' dialog box. The 'Hip/Ridge' dropdown menu is open, displaying a list of options. The 'Tile Carbon Grey', 'Tile Harvest Brown', and 'Tile Terra Brick' options are highlighted with a red circle, indicating they have been removed from the selection.

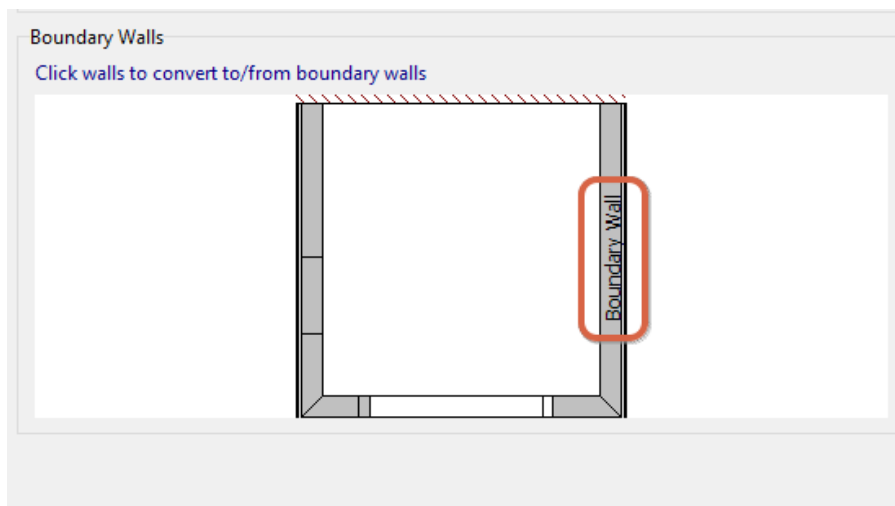
Boundary Wall Specification

You can now specify if a section of hup! wall has a boundary.

- In the Ultraframe tab click the Ultraframe Walls button
- At the bottom of this window there is a Boundary Walls section
- Click on the wall that has a Boundary and you will get the popup message to respond to, select Yes if correct.



Once the wall has been selected it will be labelled accordingly

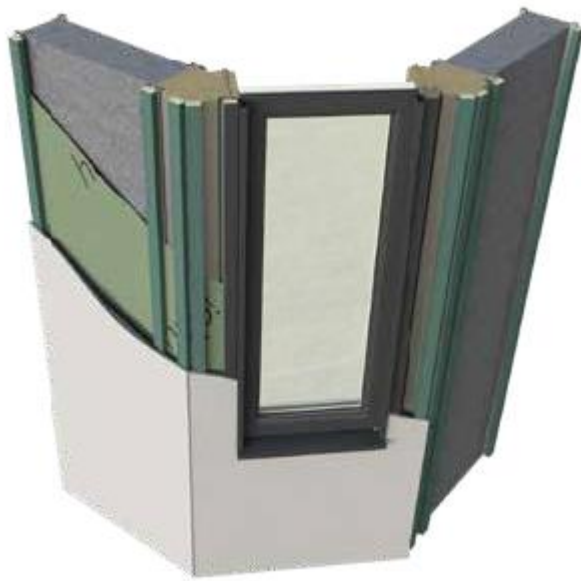


hup! Variable corners

Variable corners are now available with hup! The default Victorian templates have been made available in UDesign or you can choose the “Bespoke template”.

Key specification criteria

- Variable corners are available with wall or window / doors at either side.
- Available in angles 90° to 170° (external) and 190° and 270° (internal)
- Suitable for use on 3, 5 and 7 bay Victorians.
- 2 variable corners available: small corner and medium corner.

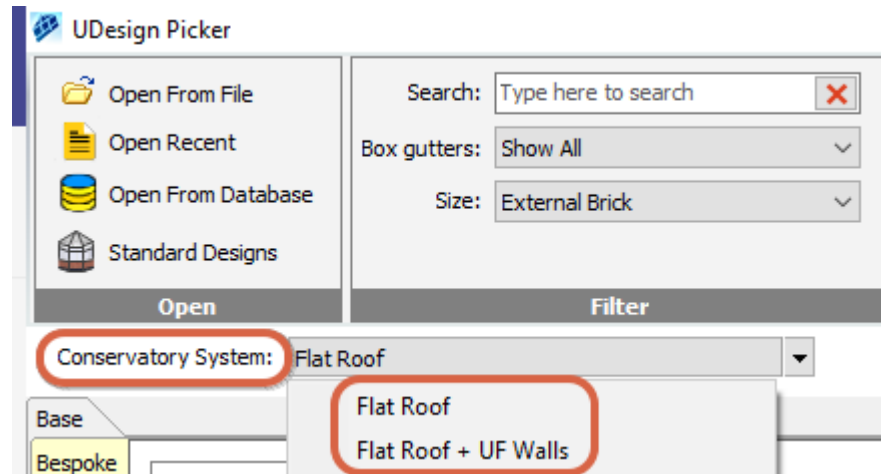


If you require detailed information, please refer to the hup! Variable Corners Specification Guide.

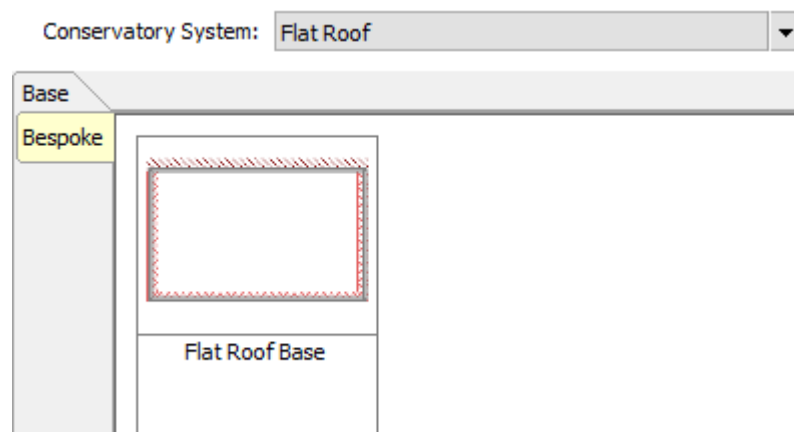
Flat Roof

Flat Roof has been added to the latest version of UDesign, giving you the ability to draw a Flat Roof and then if required, add a Lantern and/or a Flat Skylight.

When you open UDesign and the templates screen loads, if you click on the Conservatory System drop-down menu, there is now options for Flat Roof or Flat Roof + Walls



Once you have selected the Conservatory System there is only one template to choose, the Flat Roof Base.



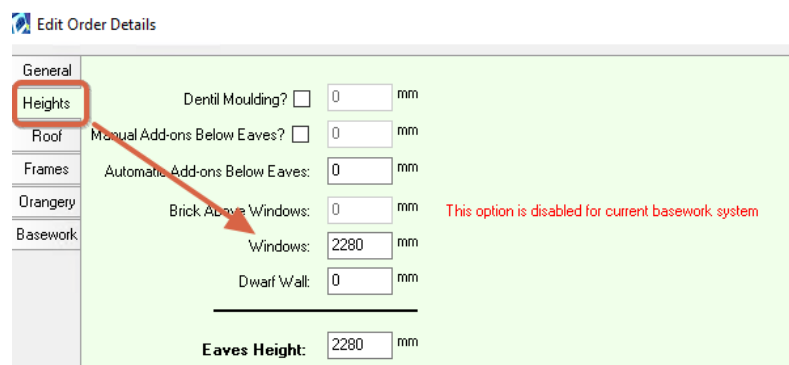
When UDesign loads you will see the usual Design Params panel. In the Design Params you can change the following: -

- Span
- Projection
- House Wall

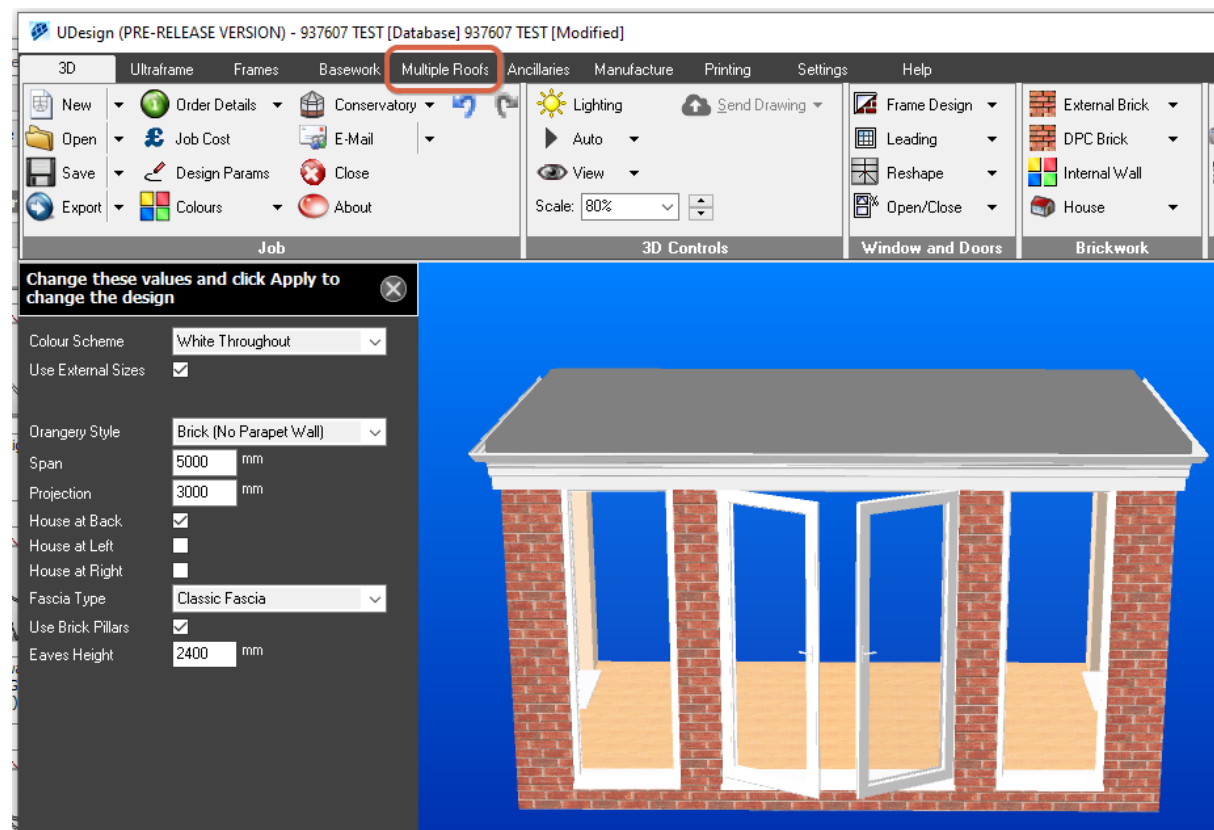
n.b. Do not untick the Use External Sizes as this is the External Base that is required.

If you need to amend the Eaves Height from the default 2400mm, then do not amend in the Design Params, this is best done in Order Details and select the Heights tab, see below.

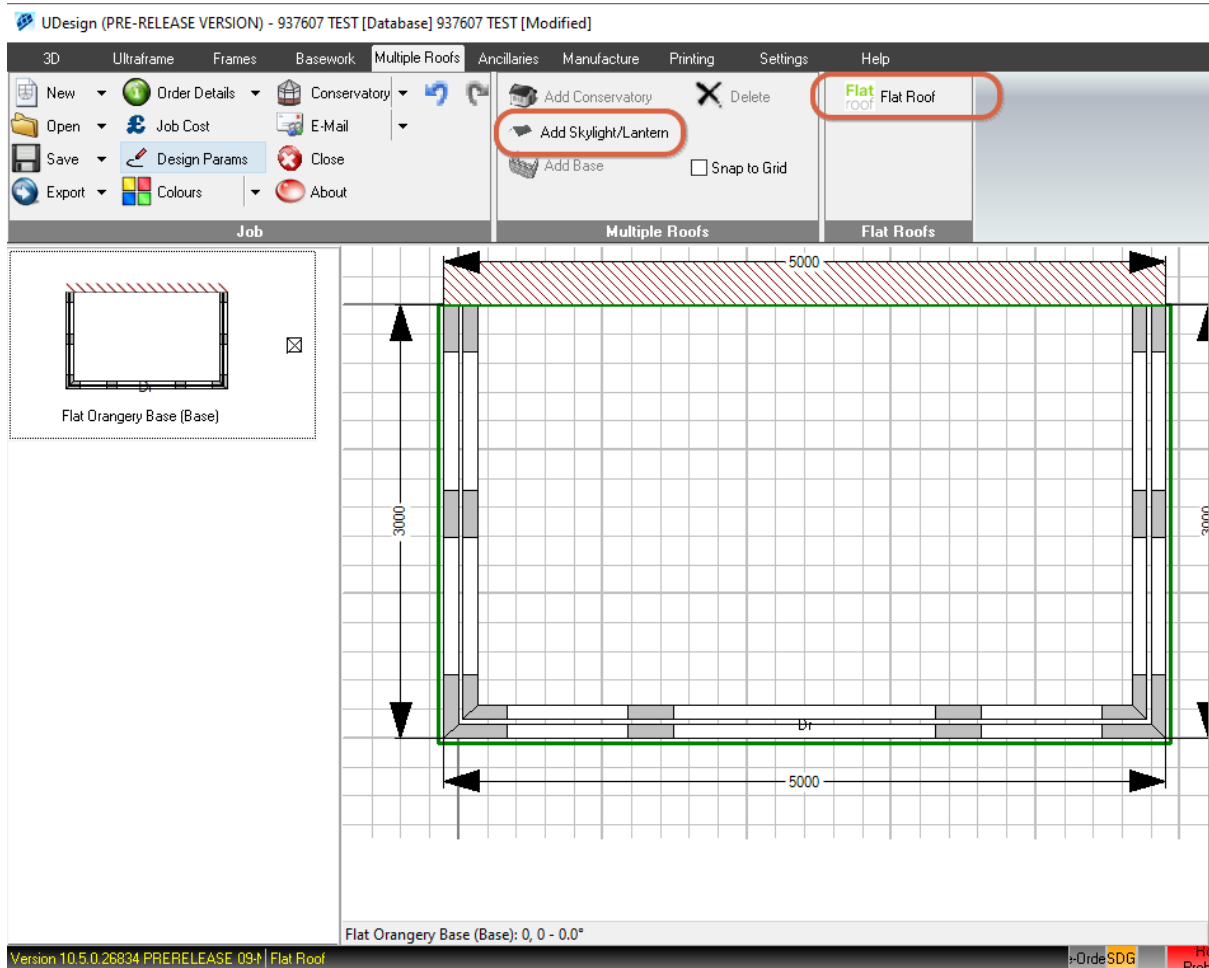
How to amend the Eaves Height



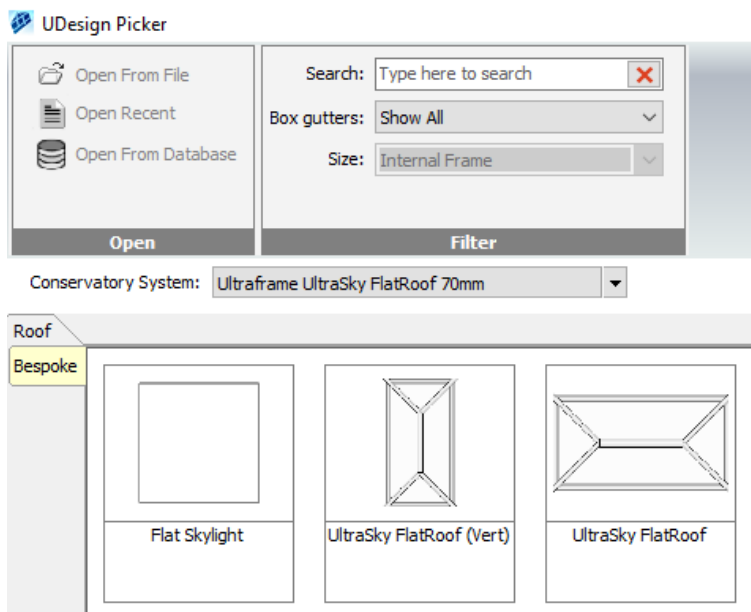
You will also notice that there is a new tab “Multiple Roofs”.



The Multiple Roofs tab is where most of your changes will take place. In this tab there are 2 buttons “Add Skylight/Lantern” and “Flat Roof”.

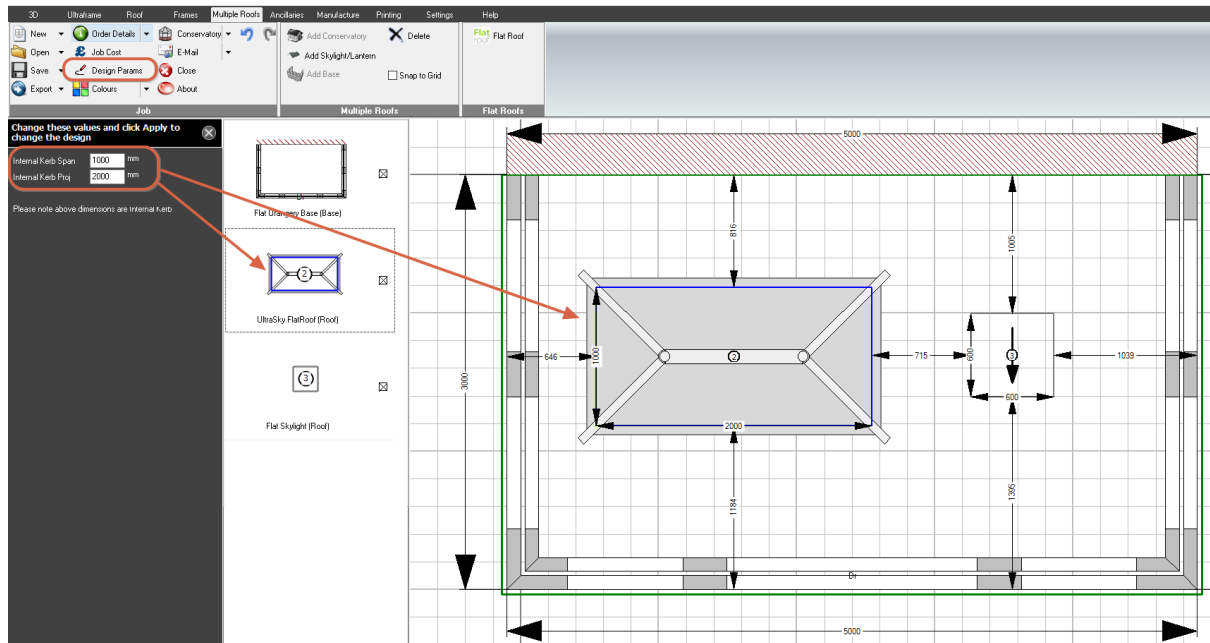


If you require a Skylight and/or a Lantern, click on the relevant button and the UDesign Picker will appear. There are 3 options available, select the required template and click OK.

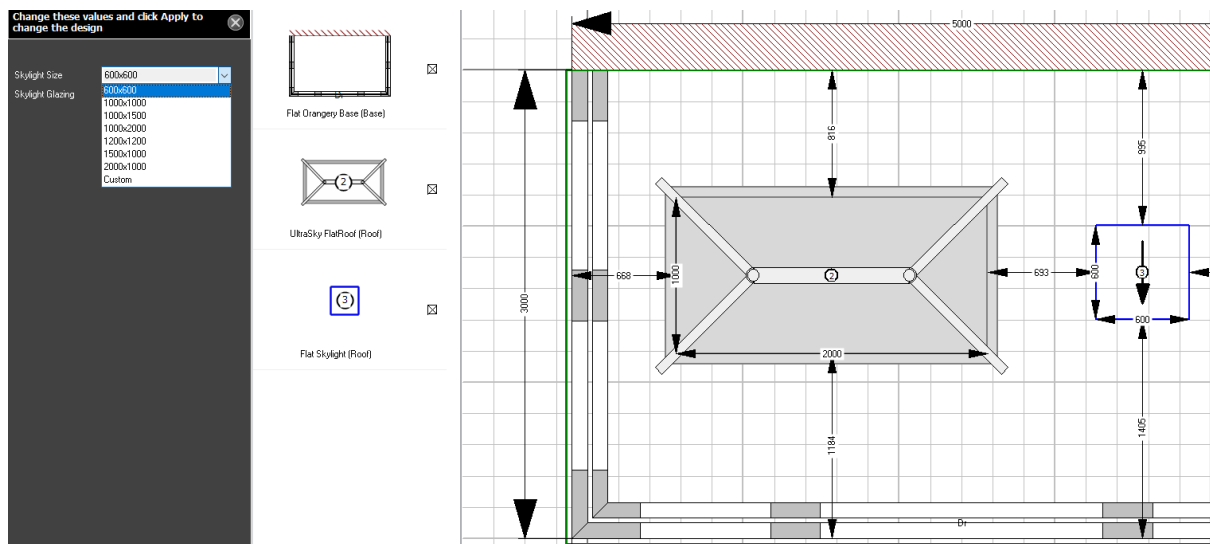


If you want to add another Skylight or Lantern, click on the button again and select the required template. To change the size of the Lantern/Skylight, click on the Design Params, then select the Lantern/Skylight you need to change.

For the Lantern you need to enter the Internal Kerb Span and Projection, this is the size of the hole required in the Flat Roof.



For the Skylight you need to select a predefined size or custom.



To get them into position you can use either: -

- CTRL + Arrows Keys – This moves the Lantern/Skylight 1mm per key press
- SHIFT + Arrow Keys – This moves the Lantern/Skylight 10mm per key press

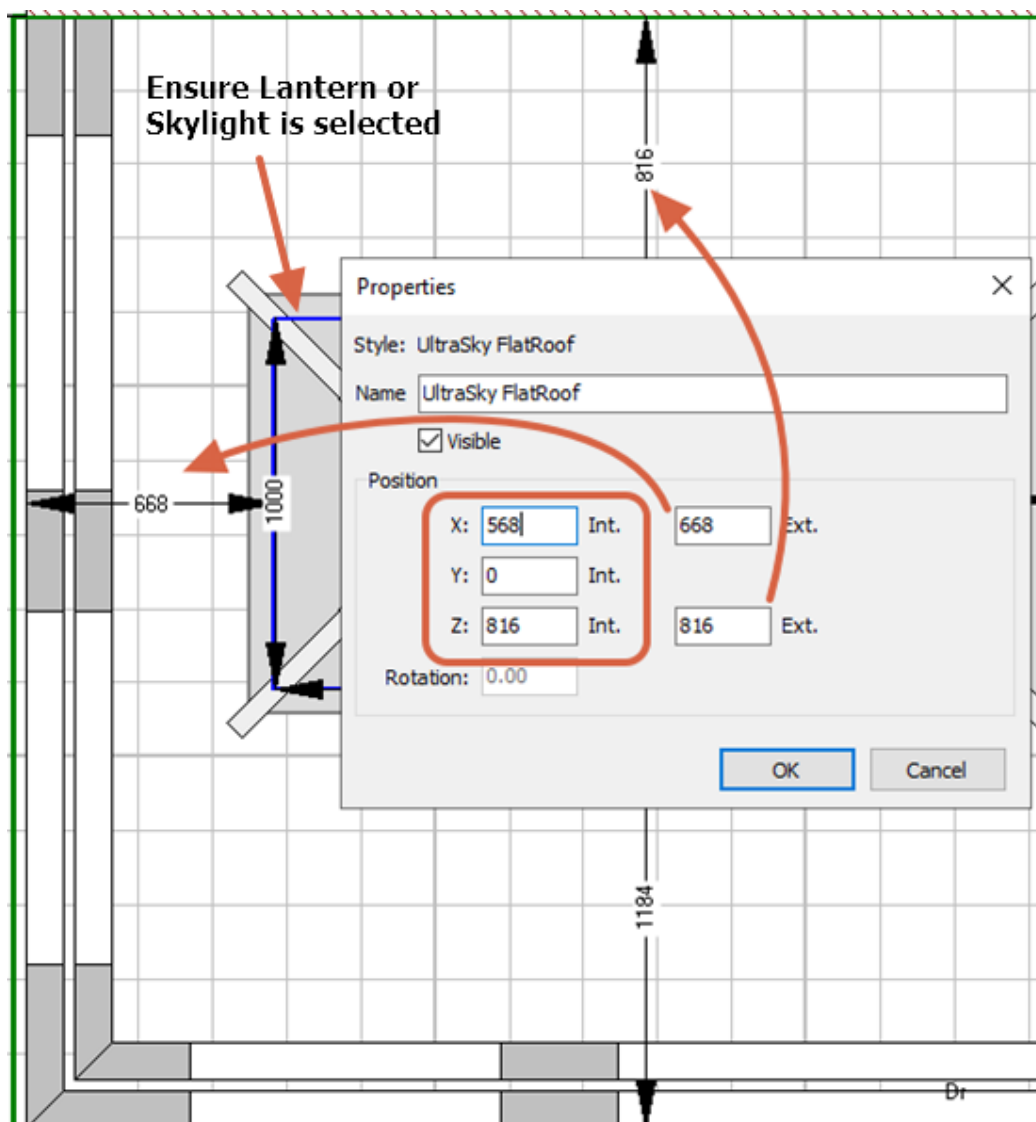
These controls are not active when Snap to Grid is selected

Or recommended

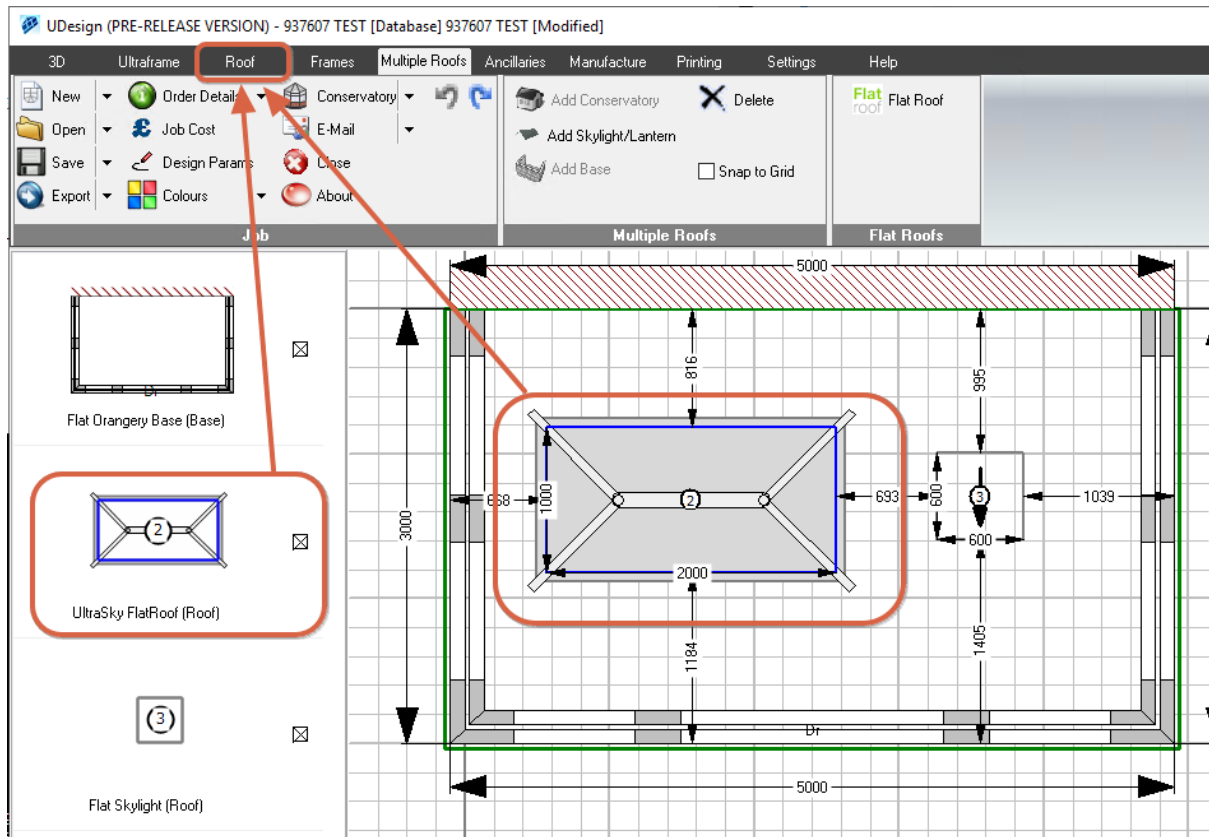
- Right Click on the Lantern/Skylight and select Properties, you can then manually type in the X and Y position in millimetres. **These are the internal dimensions, but shows the External dimensions on the Plan View.**

You can drag them roughly into position, but this will never be exact.

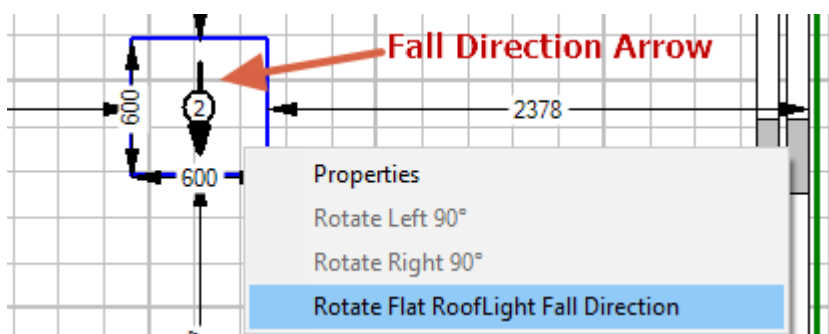
n.b. Ensure Lantern or Skylight is selected and not the Flat Roof Base



If any of your Lanterns require a Vent, then you need to click on the relevant Lantern and the select the Roof tab. You need to have the Lantern highlighted for it to appear in the Roof tab. Once you are in the Roof tab you add a Vent as normal, if you have multiple Lanterns that require Vents, then you need to follow this process for each one.

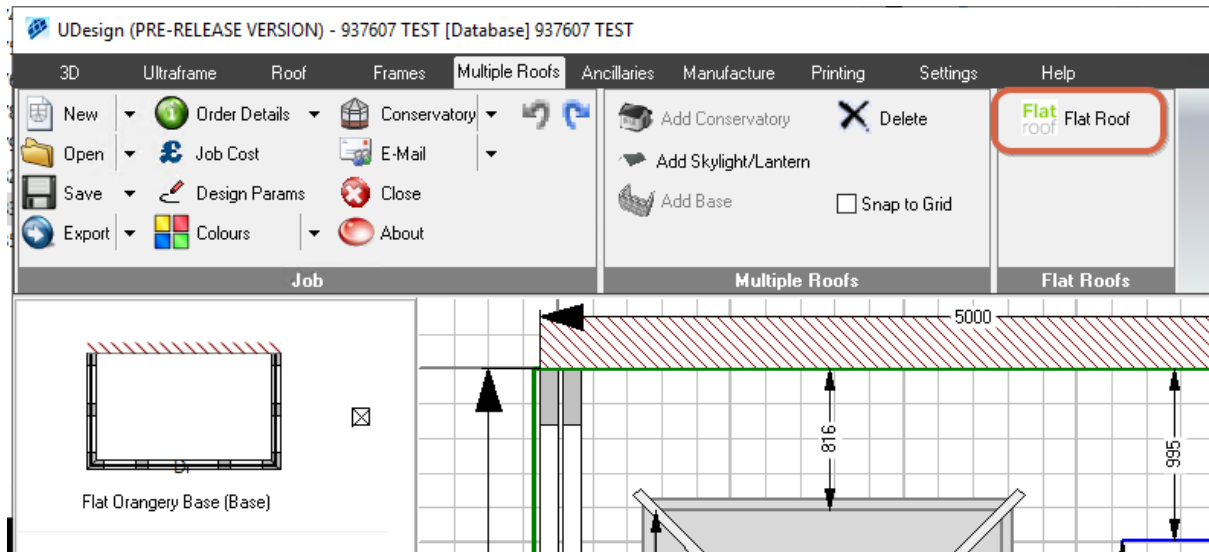


On the Flat Skylight you will need to decide the Fall Direction. Right Click on the Skylight and select Rotate Flat RoofLight Fall Direction. The black arrows indicates direction.



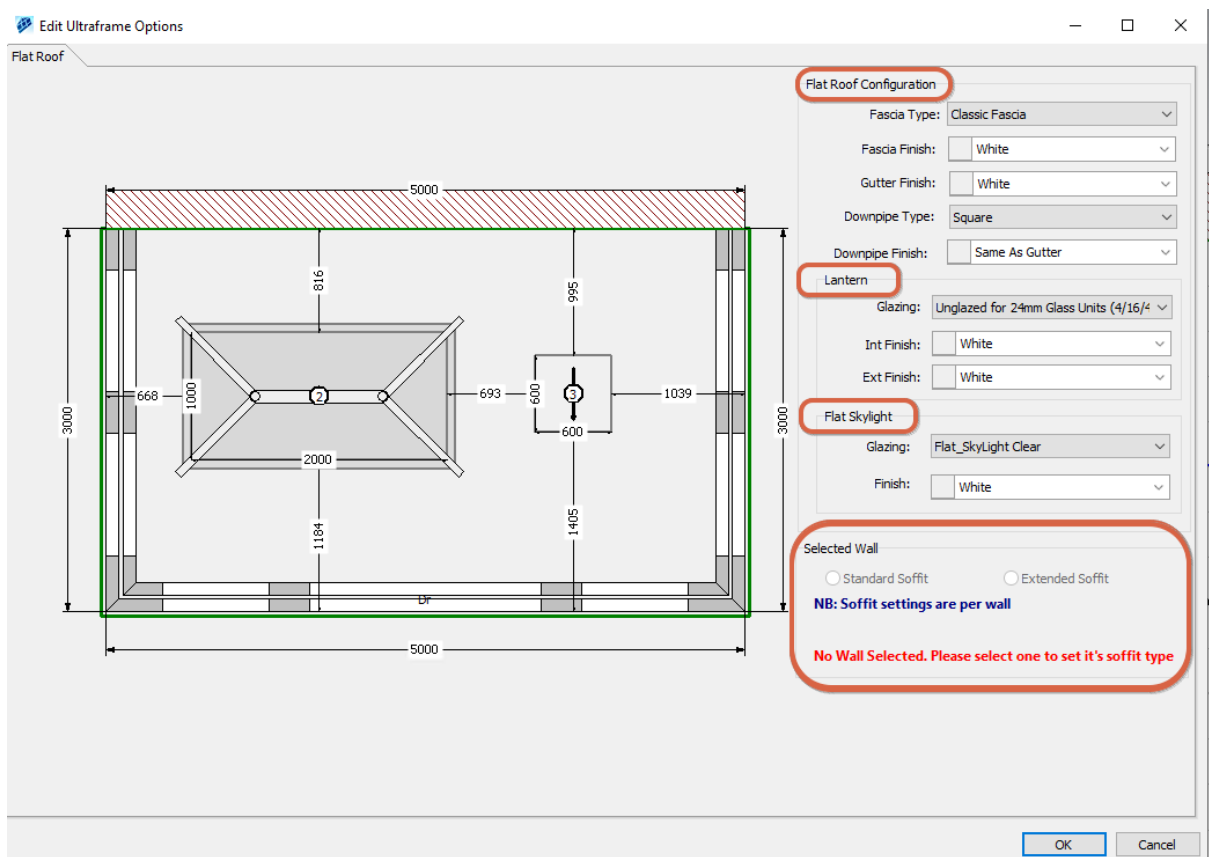
Once you have positioned your Lantern/Skylight and added any Vents, if you need to change the specification of your Flat Roof/Lantern/Skylight, then you go back to the Multiple Roofs tab.

In the Multiple Roofs tab click on the Flat Roof button.



In the Flat Roof Form there are 4 sections: -

- Flat Roof Configuration – Specify Flat Roof options
- Lantern – Specify Lantern options
- Flat Skylight – Skylight options
- Selected Wall – You can change the Soffit overhang per wall. If Extended is required click on a wall and select Extended Soffit



To ensure that your design is structurally sound you will need to amend the frames to the build specification or existing structure. You can make the necessary changes via the Frames tab in the usual manner.

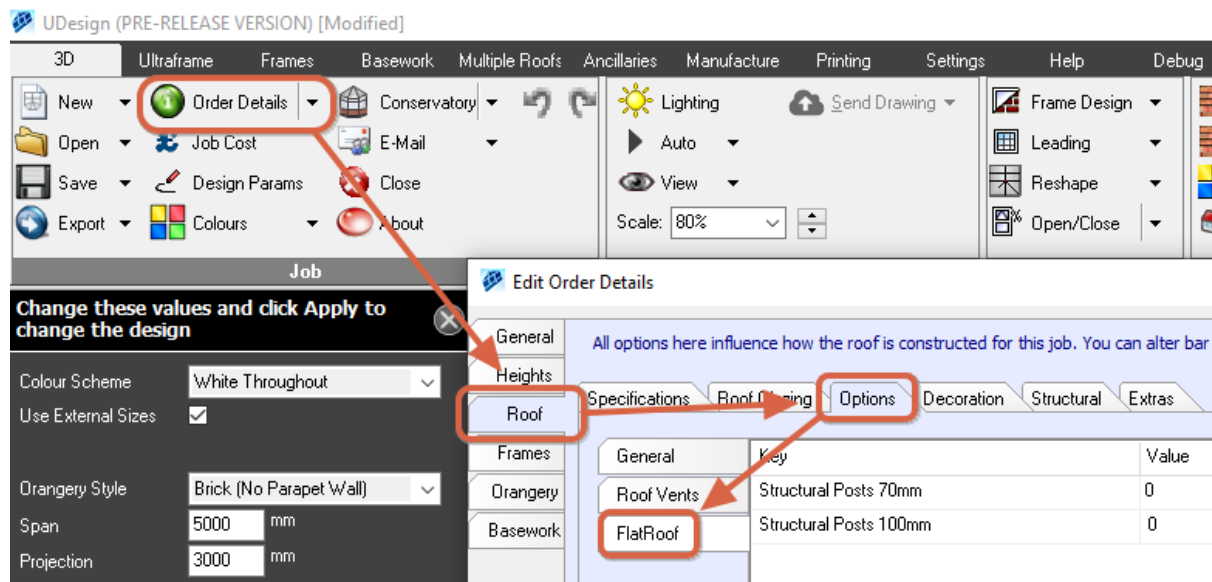
After you have made the changes to the frames, if you get either of the following Structural Post Warnings you will need to add these in Order Details to ensure that your Roof Price is correct.

e.g.

Warning: This Flat Roof requires 2 Structural Posts 70mm. Currently 0 specified

Warning: This Flat Roof requires 2 Structural Posts 100mm. Currently 0 specified

- Click on Order Details
- Roof tab
- Options tab
- Flat Roof tab
- Then apply the amount of Structural Posts required



Once you have completed your design, save the roof and click on the Printing tab.

In the Printing tab, click on the Roof Reports folder and open the Flat Roof Specification report and check that all details are correct. When checked, email to Ultraframe at FlatRoofSales@ultraframe.co.uk to place your Order.

If your design has our hup! walling system, then prior to printing the Walling Specification report please ensure Flat Roof Base is selected in the Multiple Roofs tab. This report is found in the User Reports folder.

If you require detailed information on allowed designs, please refer to the Flat Roof Specification Guide, please contact Ultraframe for a design or quote.